

State of Wyoming Corner Record

In compliance with the CORNER PERPETUATION AND FILING ACT, Wyoming Statutes, 1997 Section 33-29-140 et. seq. and the Rules and Regulations of the Board of Professional Engineers and Professional Land Surveyors)

Reverse side of this form may be used if more space is needed.

Record of original survey and citation of source of historical information (if corner is lost or obliterated). Description of corner monumentation evidence found and/or monument and accessories established to perpetuate the location of this corner. Sketch of relative location of monument, accessories, and reference points with course and distance to adjacent corner(s) (if determined in this survey). Method and rationale for reestablishment of lost or obliterated corner.

G.L.O. RECORD:

VA. 16°36'E
 NORTH BETWEEN SECTIONS 2 AND 3
 82.20 CHAINS INTERSECTING THE 4th
 STANDARD PARALLEL 10 CHAINS, 80
 LINKS WEST OF THE CORNER TO
 SECTIONS 34 AND 35 OF T17N, R64W
 AT POINT OF INTERSECTION SET A
 WHITE-FACED STONE 20"X8"X8" FOR
 CLOSING CORNER TO SECTIONS 2 AND
 3.

AT THE CORNER:

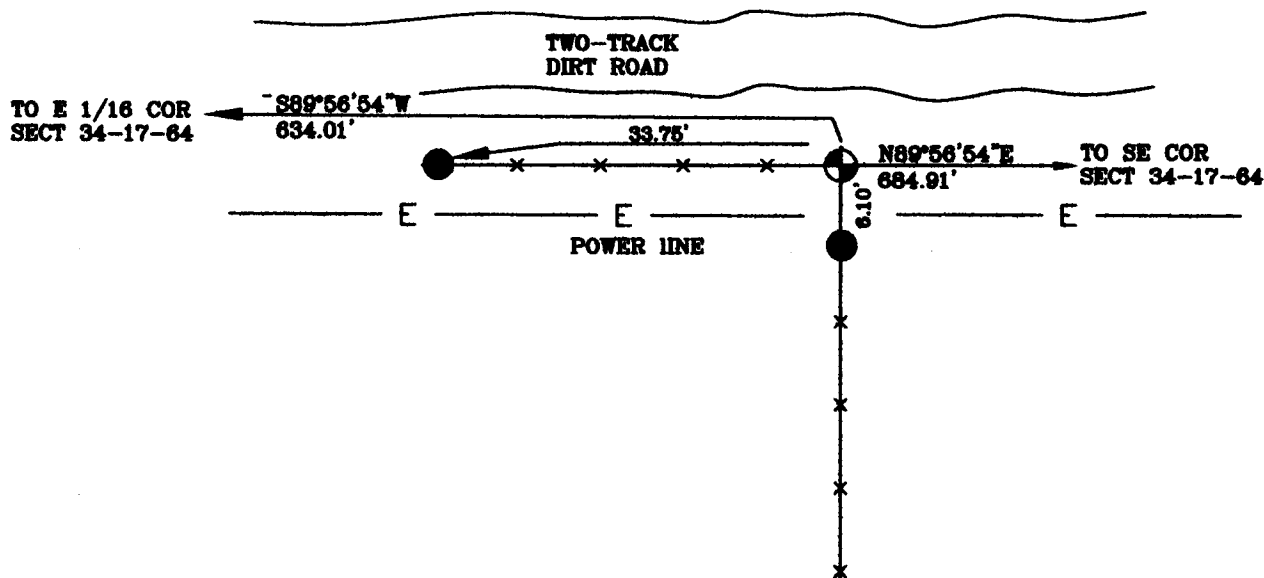
FOUND A 3 1/4" ALUMINUM CAP IN
 FENCE CORNER UP 0.2' STAMPED AS
 SHOWN.

NOTE:

ALL TIES ARE P.K.
 NAILS SET IN CEDAR
 FENCE POSTS

NOTE:

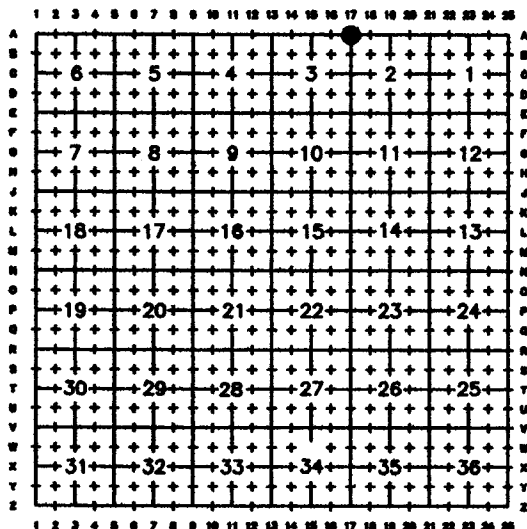
ALL FENCES ARE
 BARBED WIRE



Date of Field Work: 10/15/06

Office Reference: HUTTON

Cross Index Plat



Firm/Agency, Address

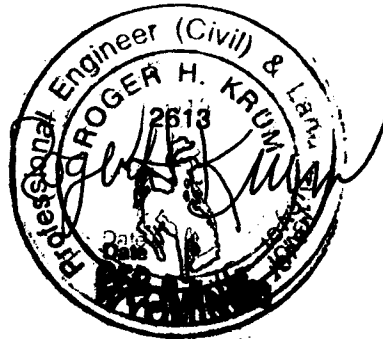
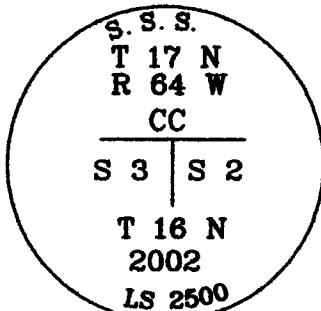
Western R&D, Ltd.
 5809 Yellowstone Rd., Suite B
 Cheyenne, Wyoming 82009

This corner record was prepared
 by me or under my direction
 and supervision.

SEAL & SIGNATURE

Telephone Number: (307) 632-5656

● Denotes Monument Found



Corner Name CLOSING CORNER Sections 2 and 3, T 16 N, R 64 W, 6th P.M.

County: LARAMIE Wyoming

Cross-Index No: A-17

SBPPEPLS/PLSW: March 1994; PLSW January 1998

